

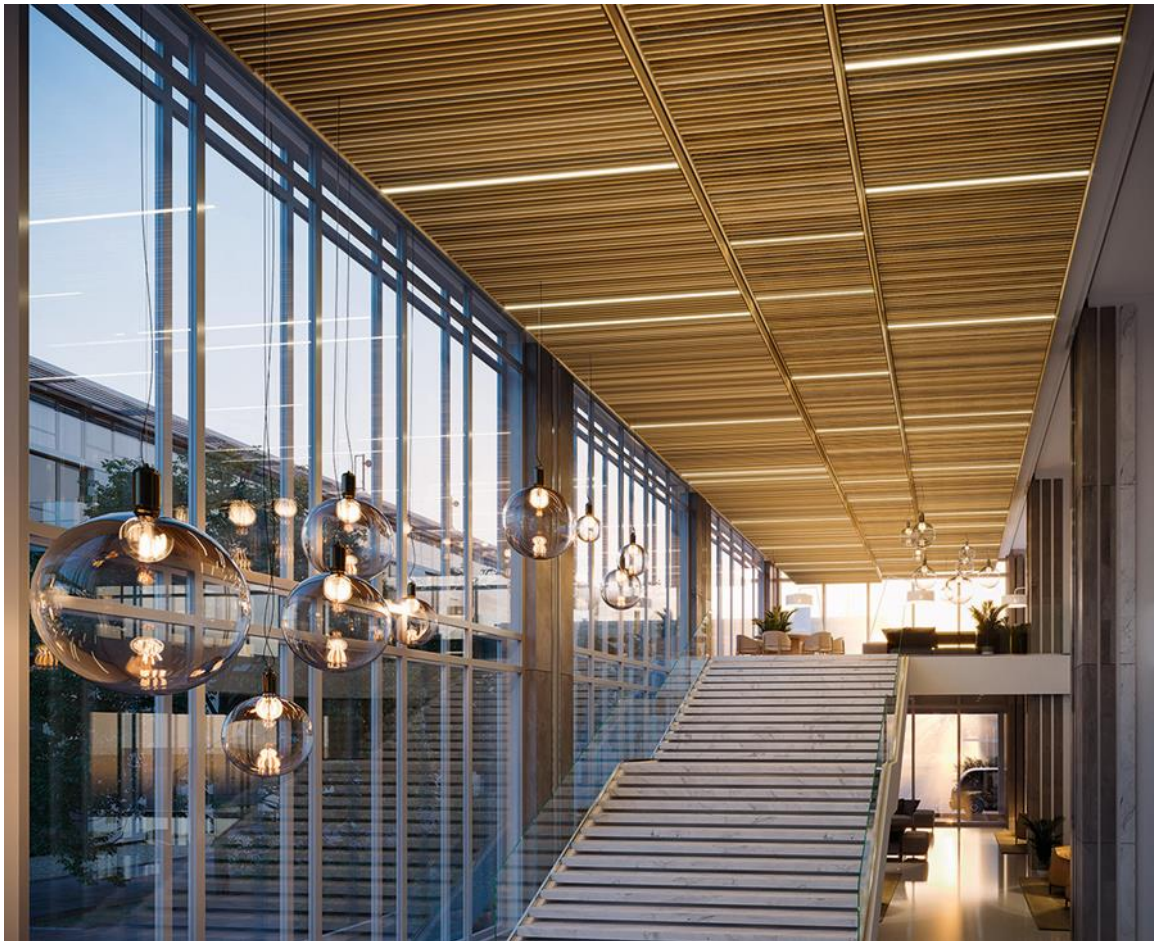


Press Release
FOR IMMEDIATE RELEASE
July 12, 2022

CONTACT:
Cindy O'Neill
717-396-5671
717-725-9514
[email](#)

New WoodWorks® Grille – Forté Ceiling and Wall Panels from Armstrong Feature Notched Backers

Enhanced structural design; available in 11 standard finishes



LANCASTER, Pa. — With the introduction of WoodWorks® Grille – Forté Ceiling and Wall Panels, Armstrong offers the beauty of solid wood in the industry's largest selection of standard grille designs. Notched alignment backers improve the structure, minimizing the naturally occurring twist of solid wood.

The enhanced panels feature 33 standard configurations in 4', 6', and 8' lengths to minimize the need for customization. Coordinating solid wood trims are available in 4" and 6" depths. The panels can be installed in ceilings, walls, or to create ceiling-to-wall transitions. In addition, varying panel lengths and heights can be selected to create a dynamic installed visual.

Five design configurations feature an open area of at least 70 percent to minimize sprinkler installation below a finished ceiling, achieving a less cluttered visual and an open aesthetic with reduced materials cost.

Custom options, including unique panel configurations and lengths and additional wood species and finishes, are also available.

Eleven Standard Finishes

WoodWorks Grille – Forté panels are available in 11 standard finishes on solid poplar. The finishes are tinted to replicate naturally occurring wood tones. The new finishes include Bleached Grey, Classic Grey, Carbon Grey, Rich Mahogany, Antique Oak, Red Oak, English Chestnut, Golden Maple, Dark Oak, Natural Walnut, and Forest Walnut.

Black acoustic infill panels hide the plenum for a clean, finished visual, providing Total Acoustics® performance with a Noise Reduction Coefficient (NRC) of up to 0.85 and a Ceiling Attenuation Class (CAC) of up to 35.

MEP Integration and Suspension

Integrated downlighting solutions from USAI® Lighting are available for WoodWorks Grille – Forté ceiling panels. These downlighting solutions are certified for fit and finish and engineered to be supported by standard Armstrong suspension systems for use in all areas, including seismic DEF zones. The panels install on familiar, heavy-duty Prelude® suspension systems with pre-drilled backer holes to eliminate splitting for long-term durability.

The panels are part of the CleanAssure™ family of cleanable, disinfectable panels, suspension systems, and trim that help make spaces cleaner and healthier.

WoodWorks Grille – Classics

The WoodWorks Grille – Classics line of solid wood ceiling and wall panels is now available in 15 standard finishes. WoodWorks Grille – Classics installs with a traditional backer, dowel, or backer-and-dowel.

For more information about WoodWorks Grille – Forté and WoodWorks Grille – Classics, visit armstrongceilings.com/grille.

About Armstrong World Industries

Armstrong World Industries, Inc. (AWI) is a leader in the design and manufacture of innovative ceiling and wall solutions in the Americas. With \$1.1 billion in revenue in 2021, AWI has nearly 3,000 employees and a manufacturing network of 15 facilities, plus six facilities dedicated to its WAVE joint venture.

DOWNLOAD

[High-res image](#)

RELATED LINKS

[WoodWorks Grille](#)

[What's New Now](#)

[CleanAssure Products](#)

RELATED NEWS

[Press Room](#)

VIDEO



Armstrong World Industries
2500 Columbia Ave.
Lancaster, PA 17603