

Inspiring Great Spaces®



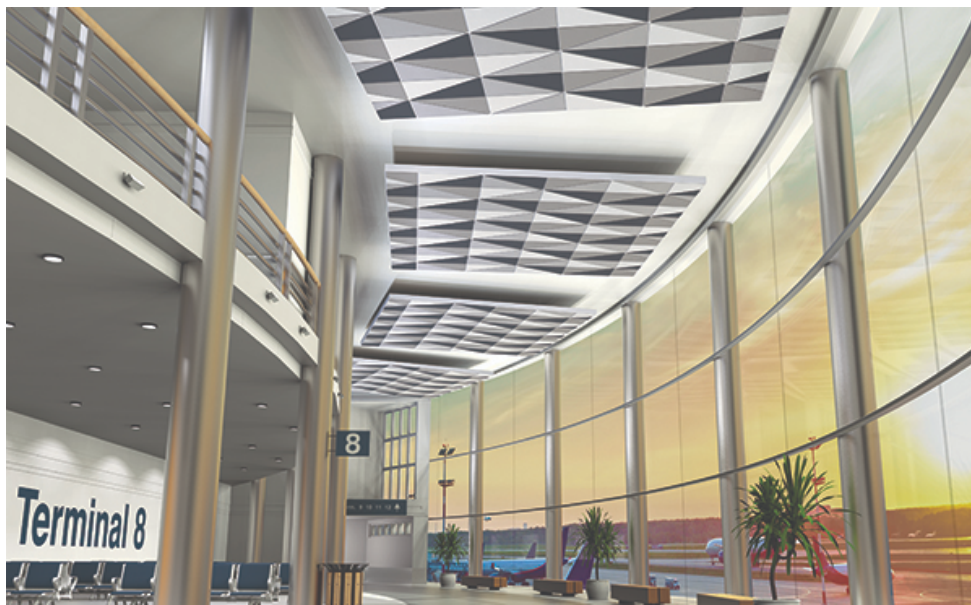
Press Release
FOR IMMEDIATE RELEASE
June 25, 2018

CONTACT:
Cindy O'Neill
717-396-5671

[email](#)

Reinvent the Ceiling Plane With New DesignFlex™ Ceiling Systems from Armstrong

Panel shapes, sizes, colors, and textures can ship in just three weeks



LANCASTER, Pa.— With the introduction of new DESIGNFlex™ Ceiling Systems, Armstrong Ceiling Solutions is giving architects and designers the freedom to reinvent their ceilings by mixing and matching different panel shapes, sizes, colors, and textures in minimum orders as small as one carton that can be ready for shipment to the job site in just three weeks.

[DESIGNFlex Ceiling Systems](#) include smooth-textured Calla® and Lyra® panels, fine-textured Ultima® and Optima® panels, and smooth-textured MetalWorks™ panels. All of these products are available in new DESIGNFlex Shapes, including triangles, parallelograms, and trapezoids. Squares and rectangles are also available in made-to-order sizes for these and a myriad of other ceiling textures. In addition, Calla and Lyra Shapes, squares and rectangles are available in any color.

Personalized Ceiling Designs

“DESIGNFlex Ceiling Systems give designers an opportunity to change the whole look of the ceiling using a unique combination of sizes, shapes, and colors in mineral fiber, fiberglass, and metal panels that are ready to ship quickly,” says Nicholas Taraborelli, Vice President, Commercial Marketing, Armstrong World Industries. “This is a first. Never before have there been so many choices that are readily available in these industry-changing shapes and sizes, transforming the decades old 2' x 2' module into a whole new world of options.”

A new online [DESIGNFlex Pattern Gallery](#) features dozens of patterns and inspiring color palettes. Details about panels, suspension systems, trim, and accessories are provided, along with complete installation instructions. Suggestions for integrating lighting and diffusers into ceiling installations are also included.

A Complete Ceiling System

Armstrong Ceiling Solutions has developed new, exclusive accessories for Prelude® 15/16" and Suprafine® 9/16" suspension systems to enable installation of angled panels for DESIGNFlex Ceiling Systems.

Many products in DESIGNFlex Ceiling Systems are part of the Sustain® portfolio, meaning that they have DeclareSM labels, EPDs, and HPDs, and meet the most stringent sustainability standards in the industry. Many of the products also feature Total Acoustics® performance, which offers the ideal combination of sound absorption and sound blocking in one panel.

For more information about DESIGNFlex Ceiling Systems, visit armstrongceilings.com/designflex. To view the online DESIGNFlex Pattern Gallery, visit armstrongceilings.com/patterngallery. Chat live or call a U.S. based TechLine expert at 1-800-276-7876 if help is needed.

About Armstrong World Industries

Armstrong World Industries, Inc. (AWI) is a global leader in the design, innovation and manufacture of commercial and residential ceiling, wall, and suspension system solutions. For more information, visit www.armstrongceilings.com.

Download

- [High resolution photo 1](#)
- [High resolution photo 2](#)
- [High resolution photo 3](#)
- [High resolution photo 4](#)

Related Links

- [DESIGNFlex Ceiling Systems](#)
- [DESIGNFlex Pattern Gallery](#)

Video



Related News

- [Press Room](#)

[What's New Brochure](#)



Armstrong World Industries
2500 Columbia Ave.
Lancaster, PA 17603